



GENERAL CATALOGUE

INTELLIGENT FLOW FOR GOOD

LEO GROUP PUMP CO., LTD.
LEO GROUP PUMP(ZHEJIANG) CO., LTD.

📍 No.1,3rd Street, East Industry Center, Wenling, Zhejiang, China, 317511

🌐 www.leopump.com

✉ export@leopump.com

☎ +86-576-89986360

📞 +86-576-89989898



Exploring more by scanning!

LEO reserves all the right of products modification without prior notification

2023 v1.0

www.leopump.com



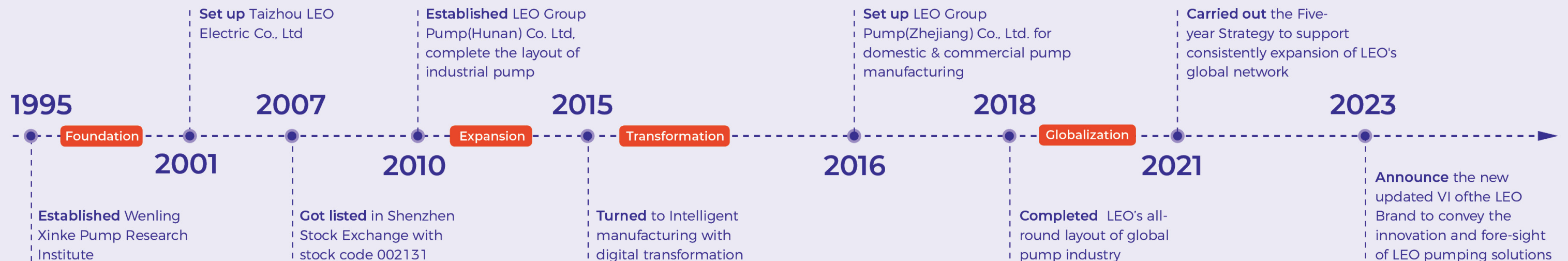


Intelligent Flow For Good

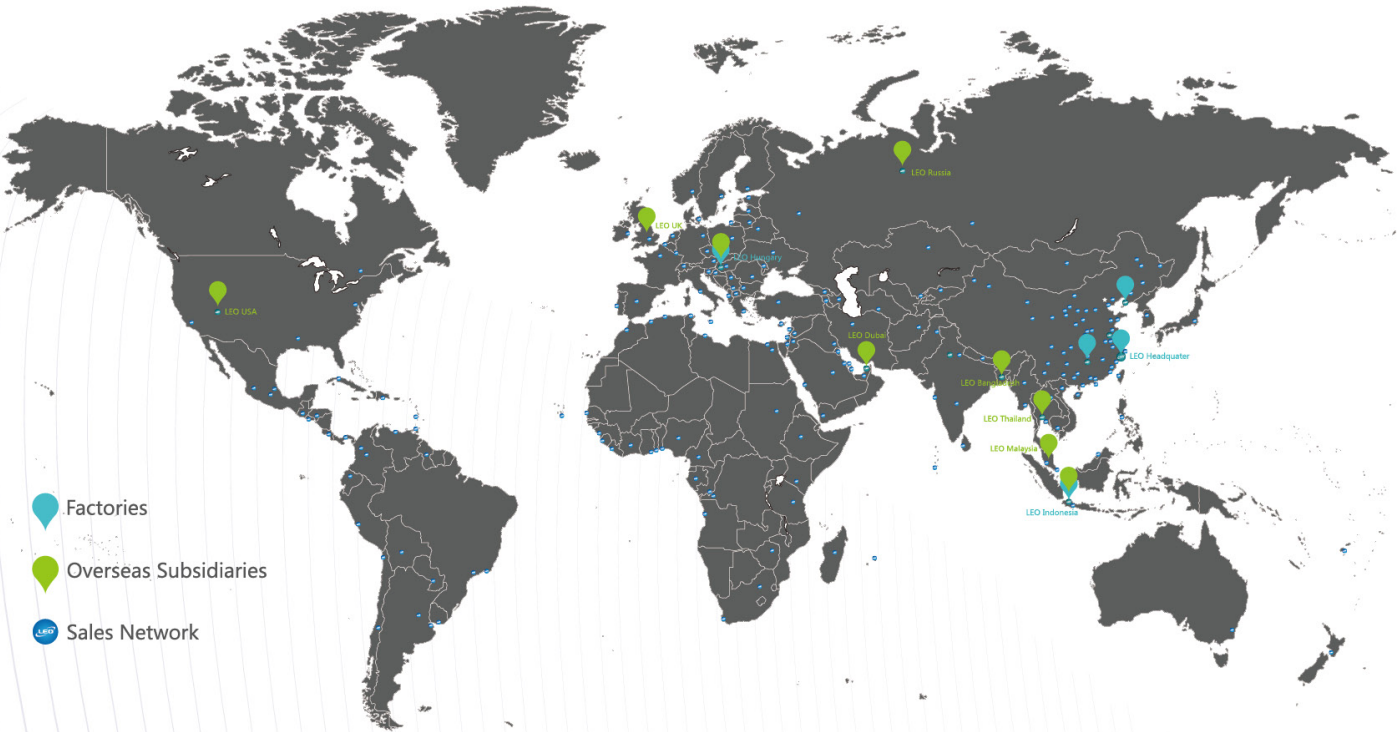
LEO PUMP, founded in 1995, is a leading professional pump & system solution provider, engaged in R&D, manufacture, sales and service of all series pumps and systems. Our products are widely used in water conservancy & water resources, power plants, petrochemical industry, mining & metallurgical industry, civilian water applications, garden machinery and solar pump& system.

With more than 28 years' profession and experience, LEO has become one of the world's famous pump brands. We have set up many production and sales subsidiaries in key regional markets, such as Dubai, Indonesia, Thailand, Malaysia, Bangladesh, USA, Hungary and Russia. Our innovations have brought changes to more than 145 countries and regions, served over 500 million end-users.

We keep adhering to philosophy of "run business with virtue, pursue success with perfection, win victory with efficiency, and go forward with right actions" and focus on developing safe and high-efficiency pump and system, being a sustainable development industry leader. Going forward we will continue our consistent creativity and development ability in each pump for human's health!



LEO WORLD



LEO IN NUMBERS

5 Production Bases	9 Overseas subsidiaries	6,000,000⁺ Pumps produced yearly
150 Countries	15,000⁺ Global sales outlets	500⁺ Million end-users served

Globally we have 5 production plants and relevant professional sales and technical teams with over 500 technicians to support global sales and service. Besides, we also set up several sales and production subsidiaries in key regional markets in Asia, Europe, and America with global employees over 6,000.

With the devoting experience and extraordinary comprehensive strength, LEO has obtained over 700 patents and become a leading pioneer among pump manufacturers and we will keep focus on the development of safe and high-efficient pump&system, being a sustainable enterprise in the industry!



Pump Manufacturing Base for Domestic and Commercial Applications



Pump Manufacturing Base for General Industrial Pumps



Pump Manufacturing Base for Petrochemical Industry

CONTENTS

1 Domestic Pump & Commercial Pump

APm	01	LKS	10
AQm	01	LKS-SE	10
APSm	01	LPT	10
APSm-AT	01	LM	11
LKSm-A/LKSm	02	LSPA	11
AKSm	02	XKP	11
AJm	02	WC	12
AJm-S	02	LGP	12
AJDm	03	LGP-C	12
ACm/ACm-C	03	LGP20i-A	12
ACm-BF/ACm-B2/ACm-B3/ACm-B4	03	LGP-W	13
2ACm/3ACm/4ACm	03	LGP-T	13
XGm	04	LDP	13
XHSm	04	KB/PB/LB	13
3ACm/4ACm/5ACm	04	BRP	14
3ACSm/4ACSm/5ACSm	04	LRP	14
2XCm-C/3XCm-C/4XCm-C/5XCm-C	05	LRP-A	14
SPm	05	LPm	14
QDX-(L)	05	LP	15
LSW	05	ABK	15
USC/AEFV	06	AMS	15
SW-L	06	ECH-D	15
WQ	06	ECH/EDH-F	16
KBZ	06	ECH/EDH	16
KBS	07	ECH/EDH-E	16
5DW	07	BP	16
4DWP	07	EMH	17
LDW	07	EMHm-SE	17
3"/4"/6"XR(P)	08	MAC	17
4"/6"XRS	08	XST	17
4LST	08	XZS	18
6"/8"/10" LS	08	LEP	18
6"LN	09	LPP	18
6"/8"/10" LC	09	EVP	18
XKF	09	LVS/LVR	19
AKS	09	WTR/WTS	19
EKJ	10	BWS	19

CONTENTS

2 Solar Pumping Solution

AP	20	LPY-P	21
AC	20	LPY	21
XKP	20	LPF	22
LDG	20	LPS	22
LDP	21	DSFP	22
LDS	21	SPIIm	22

3 Industrial Pump

D/DF	23	OH (OH-1/2)	26
DS	23	OH (OH-3)	26
NDX	23	A (BB1)	26
GS	23	HR (BB2)	26
GSX	24	MA (BB3)	27
GLN	24	M (BB4)	27
GLC	24	T (BB5)	27
HLBK	25	HY/HL/HRY (VS4)	27
ZLB	25	TV (VS1/VS6)	28
QHD/QZ	25	HT	28
WQ	25	HLB/HNB (VS5)	28

4 Accessories

Fix Membrane Tank	29	Pressure Gauge	30
Tank	29	Flexible Hose	30
Electromagnetic Switch	29	Hose	30
Intelligent Controller	29	3-Way/5-Way	30
Float Switch	29	Foot Valve	30
Pressure Switch	29	Filter	30



Domestic Pump & Commercial Pump

APm

Peripheral Pump



Technical Data

- Max. flow: 90 l/min
- Max. head: 125 m
- Power range: 0.3 ~ 2.2 kW (0.4 ~ 3 HP)
- Inlet/Outlet: 1"/1"; 3/4"/3/4"

Applications

- Can be used to transfer clean water or other liquids similar to water in physical and chemical properties
- Suitable for small living water supply, automatic water sprinkler system, small air conditioner system or supporting equipment etc.

Features

- Copper winding
- Brass impeller
- Built-in thermal protector for single phase
- Anti-rust treatment for wetted parts
- AISI 304 fabricated shaft
- Insulation class: F
- Protection class: IPX4

APSm

Self-priming Peripheral Pump



Handle on request



Technical Data

- Max. flow: 70 l/min
- Max. head : 65 m
- Power range: 0.37 ~ 1.1 kW (0.5 ~ 1.5 HP)
- Inlet/Outlet: 1"/1"; 1 1/2"/1 1/2"

Applications

- Can be used to transfer clean water or other liquids similar to water in physical and chemical properties
- Suitable for small living water supply, automatic water sprinkler system, small air conditioner system or supporting equipment etc.

Features

- Copper winding
- Brass impeller
- Built-in thermal protector for single phase
- Anti-block system for impeller
- Anti-rust treatment for wetted parts
- AISI 304 fabricated shaft
- Cast iron connector
- Insulation class: F
- Protection class: IPX4

AQm

Peripheral Pump



Technical Data

- Max. flow: 45 l/min
- Max. head : 75 m
- Power range: 0.37 ~ 0.75 kW (0.5 ~ 1 HP)
- Inlet/Outlet: 1"/1"

Applications

- Can be used to transfer clean water or other liquids similar to water in physical and chemical properties
- Suitable for small living water supply, automatic water sprinkler system, small air conditioner system or supporting equipment etc.

Features

- Copper winding
- Brass impeller
- Built-in thermal protector for single phase
- Anti-rust treatment for wetted parts
- AISI 304 fabricated shaft
- Insulation class: F
- Protection class: IPX4

APSm-AT

Self-priming Peripheral Pump



Technical Data

- Max. flow: 45 l/min
- Max. head : 50 m
- Power range: 0.25 ~ 0.75 kW (0.33 ~ 1 HP)
- Inlet/Outlet: 1"x 1"

Applications

- Can be used to transfer clean water or other liquids similar to water in physical and chemical properties
- Suitable for small living water supply, automatic water sprinkler system, small air conditioner system or supporting equipment etc.

Features

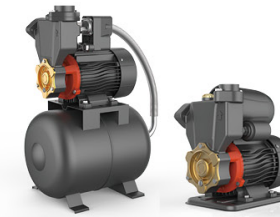
- 2 - Seconds delayed start after plugging into the socket to avoid potential danger caused by electric sparks
- Non-water protection
- Automatical detection if there is coming water from the pump inlet
- Anti-blocking protections
- Operatina status display(Powering up/Runnina/No water)

Domestic Pump & Commercial Pump



LKSm-A/LKSm

Automatic Self-priming Peripheral Pump



Technical Data

- Max. flow: 70 l/min
- Max. head : 60 m
- Power range: 0.125 ~ 1.1 kW (0.17 ~ 1.5 HP)
- Inlet/Outlet: 1 1/2"/1 1/2"; 1"/1"

Applications

- Can be used to transfer clean water or other liquids similar to water in physical and chemical properties
- Suitable for small living water supply, automatic water sprinkler system, small air conditioner system or supporting equipment etc.

Features

- Copper winding
- Brass impeller
- Built-in thermal protector for single phase motor
- Anti-rust treatment for wetted parts
- AISI 304 fabricated shaft
- Cast iron connector
- Insulation class: F
- Protection class: IPX4

AJm

Jet Pump



Technical Data

- Max. flow: 140 l/min
- Max. head : 86 m
- Power range: 0.3 ~ 2.2 kW (0.4 ~ 3 HP)
- Inlet/Outlet: 1"/1"; 1 1/2"/1 1/2"

Applications

- Can be used to transfer clean water or other liquids similar to water in physical and chemical properties
- Suitable for lifting water from the well,sprinkling irrigation in garden, pressure boosting of runnung water, and supporting equipment etc.

Features

- Copper winding
- Stainless steel impeller
- Built-in thermal protector for single phase motor
- Anti-rust treatment for wetted parts
- AISI 304 fabricated shaft
- Insulation class: F
- Protection class: IPX4

AKSm

Self-priming Peripheral Pump



Technical Data

- Max. Flow: 35 l/min
- Max. Head: 32 m
- Power range: 0.155 kW (0.2 HP)
- Max. Suction: 8 m
- Inlet/Outlet: 1"/1"

Applications

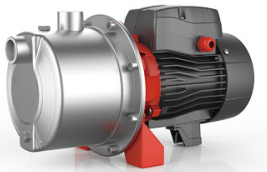
- Can be used to transfer clean water or other liquids similar to water in physical and chemical properties
- Suitable for small living water supply,automatic water sprinkler system,small air conditioner system or supporting equipment etc.

Features

- Copper winding
- Brass impeller
- Brass pump bonnet
- AISI 304
- 3 seconds time delay start
- Automatic start/stop
- Small flow condition
- Built-in thermal protector for single phase motor
- Insulation class: F
- Protection class: IPX4

AJm-S

Stainless Steel Jet Pump



Technical Data

- Max. flow: 60 l/min
- Max. head : 48 m
- Power range: 0.3 ~ 0.9 kW (0.4 ~ 1.2 HP)
- Inlet/Outlet: 1"/1"

Applications

- Can be used to transfer clean water or other liquids similar to water in physical and chemical properties
- Suitable for lifting water from the well,sprinkling irrigation in garden, pressure boosting of runnung water, and supporting equipment etc.

Features

- Copper winding
- Stainless steel pump body
- Stainless steel impeller
- Built-in thermal protector for single phase motor
- Anti-rust treatment for wetted parts
- AISI 304 fabricated shaft
- Insulation class: F
- Protection class: IPX4

AJDm

Jet Pump for Deep Wells



Technical Data

- Max. flow: 34 l/min
- Max. head : 75 m
- Power range: 0.55 ~ 1.1 kW (0.75 ~ 1.5 HP)
- Inlet/Outlet: 1 1/4"/1"

Applications

- Can be used to transfer clean water or other liquids similar to water in physical and chemical properties
- Suitable for lifting water from the well, sprinkling irrigation in garden, pressure boosting of running water, and supporting equipment etc.

Features

- Copper winding
- High suction up to 40 m
- Stainless steel impeller
- Built-in thermal protector for single phase motor
- Anti-rust treatment for wetted parts
- AISI 304 fabricated shaft
- Insulation class: F
- Protection class: IPX4

ACm-BF/ACm-B2

ACm-B3/ACm-B4

Self-priming Peripheral Pump



Technical Data

- Max. flow: 1600 l/min
- Max. head: 23.9 m
- Power range: 0.6 ~ 4 kW (0.8 ~ 5.5 HP)
- Inlet/Outlet: 2"/2"; 3"/3"; 4"/4"

Applications

- Can be used to transfer clean water or other liquids similar to water in physical and chemical properties
- Suitable for industrial use and urban water supply, pressure boosting for high buildings and fire fighting, garden irrigation, long-distance water transfer, heating ventilation and air conditioning, circulation and pressure boosting for cold and hot water, and supporting equipment etc.

Features

- Built-in thermal protector for single phase motor
- Anti-rust treatment for wetted parts
- AISI 304 fabricated shaft
- Insulation class: F
- Protection class: IPX4

ACm/ACm-C

Centrifugal Pump



Technical Data

- Max. flow: 900 l/min
- Max. head: 56.5 m
- Power range: 0.25 ~ 7.5 kW (0.3 ~ 10 HP)
- Inlet/Outlet: 1"/1"; 1 1/4"/1"; 2"/2"; 4"/3"; 1 1/2"/1"

Applications

- Can be used to transfer clean water or other liquids similar to water in physical and chemical properties
- Suitable for industrial use and urban water supply, pressure boosting for high buildings and fire fighting, garden irrigation, long-distance water transfer, heating ventilation and air conditioning, circulation and pressure boosting for cold and hot water, and supporting equipment etc.

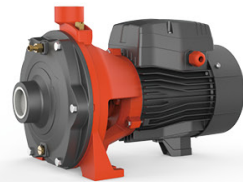
Features

- Copper winding
- Built-in thermal protector for single phase motor
- Anti-rust treatment for wetted parts
- AISI 304 fabricated shaft
- Insulation class: F
- Protection class: IPX4

2ACm

3ACm/4ACm

Multistage Centrifugal Pump



Technical Data

- Max. flow: 250 l/min
- Max. head: 82 m
- Power range: 0.45 ~ 4 kW (0.6 ~ 5.5 HP)
- Inlet/Outlet: 1"/1"; 1 1/2"/1"; 1 1/2"/1 1/4"; 1 1/4"/1"

Applications

- Can be used to transfer clean water or other liquids similar to water in physical and chemical properties
- Suitable for industrial use and urban water supply, pressure boosting for high buildings and fire fighting, garden irrigation, long-distance water transfer, heating ventilation and air conditioning, circulation and pressure boosting for cold and hot water, and supporting equipment etc.

Features

- Copper winding
- Built-in thermal protector for single phase motor
- Anti-rust treatment for wetted parts
- AISI 304 fabricated shaft
- Insulation class: F
- Protection class: IPX4

XGm

Centrifugal Pump



Technical Data

- Max. flow: 245 l/min
- Max. head: 17.5 m
- Power range: 0.6 ~ 0.75 kW (0.8 ~ 1 HP)
- Inlet/Outlet: 1 1/2"/1 1/2"

Applications

- Can be used to transfer clean water or other liquids similar to water in physical and chemical properties
- Suitable for industrial use and urban water supply, pressure boosting for high buildings and fire fighting, garden irrigation, long-distance water transfer, heating ventilation and air conditioning, circulation and pressure boosting for cold and hot water, and supporting equipment etc.

Features

- Copper winding
- Built-in thermal protector for single phase motor
- Anti-rust treatment for wetted parts
- AISI 304 fabricated shaft
- Insulation class: F
- Protection class: IPX4

3ACm-S

4ACm-S/5ACm-S

Multistage Centrifugal Pump



Technical Data

- Max. flow: 100 l/min
- Max. head: 55 m
- Power range: 0.6 ~ 0.9 kW (0.8 ~ 1.25 HP)
- Inlet/Outlet: 1"/1"

Applications

- Can be used to transfer clean water or other liquids similar to water in physical and chemical properties
- Suitable for industrial use and urban water supply, domestic water supply, high rise buildings, long distance water transfer and related auxiliary equipment etc.

Features

- Copper winding
- Built-in thermal protector for single phase motor
- Anti-rust treatment for wetted parts
- AISI 304 fabricated shaft
- Insulation class: F
- Protection class: IPX4

XHS(m)

Self-priming Centrifugal Pump



Technical Data

- Max. flow: 1660 l/min
- Max. head: 33 m
- Power range: 1.1 ~ 7.5 kW (1.5 ~ 10 HP)
- Inlet/Outlet: 2"/2"; 2.5"/2.5"; 3"/3"

Applications

- Can be used to transfer clean water or other liquids similar to water in physical and chemical properties
- Suitable for pumping water from lake, river and well
- Industrial use and agricultural irrigation

Features

- Copper winding
- Built-in thermal protector for single phase motor
- Open type cast iron impeller
- Insulation class: F
- Protection class: IPX4

3ACSm

4ACSm/5ACSm

Self-priming Multistage Centrifugal Pump



Technical Data

- Max. flow: 100 l/min
- Max. head: 55 m
- Power range: 0.6 ~ 0.9 kW (0.8 ~ 1.25 HP)
- Inlet/Outlet: 1"/1"

Applications

- Can be used to transfer clean water or other liquids similar to water in physical and chemical properties
- Suitable for industrial use and urban water supply, domestic water supply, high rise buildings, long distance water transfer and related auxiliary equipment etc.

Features

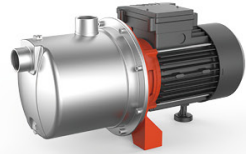
- Copper winding
- Built-in thermal protector for single phase motor
- Anti-rust treatment for wetted parts
- AISI 304 fabricated shaft
- Insulation class: F
- Protection class: IPX4



Domestic Pump & Commercial Pump

2XCm-C/3XCm-C 4XCm-C/5XCm-C

Stainless Steel Multistage
Centrifugal Pump



Technical Data

- Max. flow: 84 l/min
- Max. head: 56.5 m
- Power range: 0.37 ~ 0.9 kW (0.5 ~ 1.2 HP)
- Inlet/Outlet: 1"/1"

Applications

- Can be used to transfer clean water or other liquids similar to water in physical and chemical properties
- Suitable for industrial use and urban water supply, domestic water supply, high rise buildings, long distance water transfer and related auxiliary equipment etc.

Features

- Copper winding
- Built-in thermal protector for single phase motor
- Anti-rust treatment for wetted parts
- AISI 304 fabricated shaft
- Insulation class: F
- Protection class: IPX4

QDX-(L)

Submersible Pump



Technical Data

- Max. flow: 1250 l/min
- Max. head: 32.5 m
- Power range: 0.25 ~ 2.2 kW (0.3 ~ 3 HP)

Applications

- Small electrical irrigation and drainage equipments
- Particularly applied in urban well water pumping, field irrigation and drainage, garden irrigation and household water supply, as well as drainage of industrial accumulated water, water supply and drainage for construction, livestock breeding, etc.

Features

- Copper winding
- Built-in terminal protector
- AISI 304 fabricated shaft
- Automatic start and stop with float switch
- Insulation class: B
- Protection class: IP68
- Cast iron motor case & aluminum motor case both available

SPm

Submersible Peripheral Pump



Technical Data

- Max. flow : 33.4 l/min
- Max. head : 41.4 m
- Power range: 0.37 kW (0.5 HP)
- Outlet: 1"

Applications

- Can be used to transfer clean water or other liquids similar to water in physical and chemical properties
- Suitable for small living water supply, automatic water sprinkler system, small air conditioner system or supporting equipment etc.

Features

- Copper winding
- Brass impeller
- Built-in thermal protector for single phase motor
- Anti-rust treatment for wetted parts
- AISI 304 fabricated shaft
- Insulation class: F
- Protection class: IPX8

LSW

Submersible Sewage Pump



Technical Data

- Max. flow: 533 l/min
- Max. head: 19 m
- Power range: 0.18 ~ 1.5 kW (0.25 ~ 2 HP)
- Outlet: 1 1/2", 2"

Applications

- Suitable for buildings, hospitals, residential quarters, municipal engineering, road traffic and construction, factory sewage, sewage treatment, and other occasions
- It is used to discharge wastewater, rainwater, and sewage containing solid particles

Features

- Copper winding
- Built-in thermal protector for single phase motor
- AISI 304 fabricated shaft
- Automatic start and stop with float switch
- Insulation class: F
- Protection class: IPX8

Domestic Pump & Commercial Pump

USC/AEFV

Submersible Sewage Pump



Technical Data

- Max. flow : 22.5 m³/h
- Max. head : 11.5 m
- Power range: 0.25 ~ 0.56 kW
- Outlet: 1.5"

Applications

- Suitable to be immersed in water for lifting from well or the pool, and draining water from the basement
- Can be used to transfer dirty water or other liquids similar to water in physical and chemical properties
- Can be used in mine, pipe pressure and residential water supply

Features

- AISI 304 shaft
- Insulation class: B
- Protection class: IP68

WQ

Submersible Sewage Pump



Technical Data

- Max. flow: 1080 m³/h
- Max. head: 94 m
- Power range: 0.25 ~ 45 kW (0.33 ~ 60 HP)

Applications

- Wastewater drainage in factories, construction sites and commercial facilities
- Drainage system in municipal sewage treatment plants
- Drainage station in residential quarters
- Municipal projects
- Methane pools and field irrigation in countryside

Features

- Leak-proof detector
- Dual mechanical seal
- Oil jacket
- Insulation class: F
- Protection class: IPX8

SW-L

Submersible Sewage Pump



Technical Data

- Max. flow: 300 m³/h
- Max. head: 50 m
- Power range: 0.55 ~ 7.5 kW (0.75 ~ 10 HP)

Applications

- Garden watering
- Drainage of agricultural sewage water
- Drainage in buildings and construction sites
- Domestic and municipal drainage
- Industrial drainage for food, leather, paper pulp, dyeing and printing, etc.

Features

- Varieties of impeller types available
SWE-L (Enclosed channel impeller)
SWU-L (Semi-open vortex impeller)
SWP-L (Semi-open vortex impeller with cutter)
- Detachable cable design
- Reliable sealing design
- Insulation class: F
- Protection class: IPX8

KBZ

Submersible Dewatering Pump



Technical Data

- Max. flow: up to 156 m³/h
- Max. head: up to 56 m
- Max. immersion depth: 25 m
- Power range: 1.5 ~ 15 kW (2 ~ 20 HP)

Applications

- Civil engineering
- Mines, quarries, Coal ore & slurries
- Sewage treatment plants
- General pumping purposes

Features

- Copper winding
- Insulation class: B
- Protection class: IP68



Domestic Pump & Commercial Pump

KBS

Submersible Slurry Pump



Technical Data

- Max. flow: up to 192 m³/h
- Max. head: up to 21.5 m
- Max. immersion depth: 25 m
- Power range: 1.5 ~ 15 kW (2 ~ 20 HP)

Applications

- Civil engineering
- Mines, quarries, Coal ore & slurries
- Sewage treatment plants
- General pumping purposes
- Pumping fluid: sludge, liquids containing mud and bentonite

Features

- Copper winding
- Insulation class: B
- Protection class: IP68

5DW

Submersible Borehole Pump



Technical Data

- Max.Flow: 183 l/min
- Max.Head: 99 m
- Power range: 0.55 ~ 1.5 (0.75 ~ 2 HP)
- Min. immersion: 100 mm
- Max. immersion: 20 m
- Min. well diameter: 5"

Applications

- Lift water from wells or reservoirs
- Domestic, industrial and civil water supply
- Garden use and irrigation

Features

- Rewindable motor
- Insulation class: F
- Protection class: IP68

4DWP

Submersible Borehole Pump



Technical Data

- Max. flow: 45 l/min
- Max. head : 110 m
- Power range : 0.75 ~ 1.5kW (1 ~ 2 HP)
- Max. immersion: 50 m
- Min. well diameter: 4"

Applications

- Lift water from wells or reservoirs
- Domestic, industrial and civil water supply
- Garden use and irrigation

Features

- Rewindable motor
- Can equip with control box

LDW

Intelligent Deep Well Pump



Technical Data

- Max. flow: 6 m³/h
- Max. head: 55 m
- Max. immersion depth: 19 m
- Power range: 1.1 kW

Applications

- Transferring water from deep well
- Domestic water supply
- Garden irrigation
- Agriculture irrigation

Features

- Automatic ON/OFF
- High pressure
- Dry-running protection
- Water-cooling

Domestic Pump & Commercial Pump



3"/4"/6" XR(P)

Submersible Borehole Pump



Technical Data

- Max. flow: 1200 l/m
- Max. head: 450 m
- Power range: 0.18 ~ 30 kW (0.25 ~ 40 HP)

Applications

- For water supply from wells or reservoirs
- For domestic use, for civil and industrial applications
- Agricultural irrigation

Features

- Minimum well diameter: 3"
- Maximum immersion: 80 m

4"/6" XRS

Submersible Borehole Pump



Technical Data

- Max. flow: 1300 l/m
- Max. head: 561 m
- Power range: 0.37 ~ 30 kW (0.5 ~ 40 HP)

Applications

- For water supply from wells or reservoirs
- For domestic use, for civil and industrial applications
- Agricultural irrigation

Features

- Minimum well diameter: 4"
- Maximum immersion: 80 m

4LST

Submersible Borehole Pump



Technical Data

- Max. flow: 400 l/min
- Max. head: 367 m
- Max. solid content: 0.1 %
- Max chlorine content: 400 mg/L
- Min well diameter: 4"

Applications

- Transfer clean water contains sand (up to 0.1%)
- Supply water from wells or reservoirs
- Domestic, industrial and garden application

Features

- Sand resistant construction
- NEMA dimension standards
- Equipped with start control box for single phase
- Digital auto-control box available on request for three pahse

6"/8"/10" LS

Stainless Steel Submersible Borehole Pump



Technical Data

- Max. flow: 270 m³/h
- Max. head: 515 m
- Power range: 0.55 ~ 37 kW

Applications

- Suitable for clean water
- For water supply for wells or reservoirs
- For domestic use and industrial applications
- For garden use and irrigation

Features

- Pump size: 6",7",8"(Min well dia.)
- Long service life & High efficiency
- AISI 304 wetted parts
- Easy maintenance structure
- Pump connection in NEMA standard
- Built-in check valve to prevent damage to pump from back flow



Domestic Pump & Commercial Pump

6" LN

Noryl Impeller Submersible Borehole Pump



Technical Data

- Max. flow: 80 m³/h
- Max. head: 408 m
- Power range: 4 ~ 37 kW

Applications

- Suitable for clean water
- For water supply from wells pr reservoirs
- For domestic use and industrial applications
- For garden use and irrigation

Features

- Pump size: 6"
- Long service life & High efficiency
- Engineering plastic impeller (Noryl)
- Easy maintenance structure
- Pump connection in NEMA standards
- Built-in check valve to prevent damage to pump from back flow

6"/8"/10" LC

Cast Iron Impeller Submersible Borehole Pump



Technical Data

- Max. flow: 378 m³/h
- Max. head: 446 m
- Power range: 6 ~ 250 kW

Applications

- Suitable for clean water
- For water supply for wells or reservoirs
- For domestic use and industrial applications
- For garden use and irrigation

Features

- Pump size: 6",7",8"(Min well dia.)
- Long service life & High efficiency
- Cast iron wetted parts
- Easy maintenance structure
- Pump connection in NEMA standard
- Built-in check valve to prevent damage to pump from back flow

XKF

Fountain Pump



Technical Data

- Max. flow: 62.5 l/min
- Max. head: 3.7 m
- Input power range: 15 ~ 110 W
- Outlet: 13 ~ 19 mm

Applications

- Supplying flow of water to fountains and devices used for aesthetic purposes
- Aeration in residential and commercial applications

Features

- Ideal for small displays, fountains and waterfalls
- Choice of 5 fountain heads (cascade, water bell,foaming jet, lily & trumpet)
- 10 m cable

AKS

Garden Jet Pump



Technical Data

- Max. flow: 13.6 m³/h
- Max. head: 7.4 m
- Power range: 250 ~ 750 W
- Outlet: 1.25", 1.5"

Applications

- Transfer of clean water or dirty water
- Suitable to lift water from wells or ponds
- Drain water from basement
- For small equipment and water supply system

Features

- Built-in thermal protector
- Insulation class: F
- Protection class: IPX8

Domestic Pump & Commercial Pump



EKJ

Garden Jet Pump



Technical Data

- Max. flow: 4.8 m³/h
- Max. head: 48 m
- Power range: 600 ~ 1200 W

Applications

- Transfer of clean water or other liquid similar to water in physical and chemical properties
- Water supply and drainage in garden
- Pressure boosting

Features

- Built-in thermal protector
- Insulation class: F
- Protection class: IPX4

LKS-SE

Automatic Submersible Pressure Pump



Technical Data

- Max. flow: 6 m³/h
- Max. head: 45 m
- Power range: 900 ~ 1100 W
- Outlet: 1"

Applications

- Transfer of clean water
- For small equipment and water supply system

Features

- Built-in integrated electronics
- Automatic start and stop
- Dry-running protection
- Protection class: IPX8

LKS

Multistage Impeller Submersible Pump



Technical Data

- Max. flow: 7 m³/h
- Max. head: 52 m
- Power range: 900 ~ 1300 W
- Outlet: 1"

Applications

- This pump is mainly used for use in tradition wells, water deposits and collection tanks
- Also suitable for small scale irrigation systems

Features

- Built-in thermal protector
- Insulation class: F
- Protection class: IPX8

LPT

Petrol Tillers



Technical Data

- Tilling width: 36 ~ 45 cm
- Displacement: 79cc , 99cc
- Tilling depth: 0 ~ 130 mm
- Fuel tank: 1L , 1.8L
- Power range: 3 HP
- Blade quantity: 4 ~ 6
- Drive type: 1 forward

Applications

- The innovative LEO petrol tiller make cultivating the soil a lot easier and faster.
- This powerful machine minimize the effort,is simple to operate and ensure highly efficient work with their sturdy design,robust components and precisely adapted blades.

Features

- Adjustable handle
- Easy transport
- Protection Discs
- Steel protector



Domestic Pump & Commercial Pump

LM

Lithium-ion Lawnmowers



Technical Data

- Cutting width: 40 ~ 51 cm
- Cutting height: 25 ~ 75 mm , 30 ~ 80 mm
- Charging time: 1 ~ 2 h
- Min running time: 35 ~ 50 mins
- Power range: 600 ~ 1000 W

Applications

- Can used to lawn care

Features

- Lithium-ion battery
- Efficient and powerful
- Environment friendly
- Easy to use
- Mulching, collection, side discharging

LM

Petrol Lawnmowers



Technical Data

- Cutting width: 40 ~ 51 cm
- Cutting height: 25 ~ 75 mm , 30 ~ 80 mm
- Displacement: 79cc , 139cc , 173cc
- Fuel tank: 1 L , 1.3 L , 1.5 L
- Power range: 3 ~ 5.5 HP

Applications

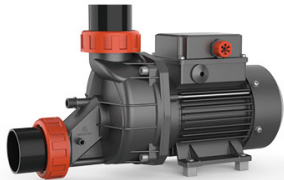
- Can used to lawn care

Features

- Excellent mowing performance
- Easy operation and maintenance
- Ergonomic and effort saving features
- Mulching, collection, side discharging, electric start

LSPA

Bathtub Pump



Technical Data

- Max. flow: 430 l/min
- Max. head: 12 m
- Power range: 600 ~ 1300 W (0.8 ~ 1.7 HP)
- Inlet/Outlet: 32 mm, 50 mm

Applications

- Water circulation for hydromassage, swimming pool, Fish farming
- Bath & swimming pool water supply

Features

- Built in terminal protector
- Engineering plastic pump body and wetted parts
- AISI304 fabricated shaft.
- Insulation class: F
- Protection class: IPX5
- Equipped with air switch
- S1 Duty

XKP

Pool Pump



Technical Data

- Max. flow: 500 l/min
- Max. head: 19.9 m
- Power range: 250 ~ 2200 W (0.33 ~ 3 HP)
- Inlet/Outlet: 40 mm /40 mm; 48.5 or 50 mm /48.5 or 50 mm ; 1.5"/1.5"

Applications

- Transfer of clean water or other liquids similar to water in physical and chemical properties
- Water circulation with filter function in small and medium-sized swimming pools

Features

- Built-in terminal protector
- Engineering plastic pump body
- AISI 304 fabricated shaft
- Insulation class: F
- Protection class: IPX5

Domestic Pump & Commercial Pump



WC

Domestic Lifting Station



Technical Data

- Max. flow: 100 l/min
- Max. head: 8.5 m
- Power range: 600 W

Applications

- Suitable for pumping of wastewater off places in private dwellings and basements
- Typically used for toilets, wash basins, bathtubs, cabinet showers, washing machines, etc.

Features

- Easy installation and free from maintenance
- High efficient cutting system
- Top quality air switch and carbon filter
- Circuit board inside for time delay operation and low voltage protection

LGP

Gasoline Engine Pump



Technical Data

- Max. flow: 72 m³/h
- Max. head: 80 m
- Power range: 1.6 HP , 3 HP , 6.5 HP
- Inlet/Outlet: 2"/2"; 3"/3"; 4"/4"

Applications

- Transfer clean water or other liquids similar to water in physical and chemical properties
- Water supply and drainage for factories, mines, municipal facilities, etc.
- Fire fighting

Features

- High efficiency hydraulic system
- Low fuel consumption
- Anti-rust impeller and diffuser
- High quality forged steel crankshaft

LGP-C

Gasoline Engine Pump



Technical Data

- Max. flow: 60 m³/h
- Max. head: 30 m
- Power range: 6.5 HP
- Inlet/Outlet: 2"/2"; 3"/3"

Applications

- Transfer clean water or other liquids similar to water in physical and chemical properties
- Water supply and drainage for factories, mines, municipal facilities, etc.
- Fire fighting

Features

- High efficiency hydraulic system
- Low fuel consumption
- Anti-rust impeller and diffuser
- High quality forged steel crankshaft

LGP20i-A

Cast Iron Gasoline Engine Pump



Technical Data

- Max. flow: 28 m³/h
- Max. head: 50 m
- Power range: 6.5 HP
- Inlet/Outlet: 2"/2"

Applications

- Transfer clean water or other liquids similar to water in physical and chemical properties
- Water supply and drainage for factories, mines, municipal facilities, etc.
- Fire fighting

Features

- Cast iron pump body with e-coating
- High efficiency hydraulic system
- Low fuel consumption
- Anti-rust impeller and diffuser
- High quality forged steel crankshaft



Domestic Pump & Commercial Pump

LGP-W

Gasoline Sewage Pump



Technical Data

- Max. flow: 60 m³/h
- Max. head: 30 m
- Power range: 6.5 HP
- Inlet/Outlet: 3"/3"

Applications

- Field irrigation and agricultural drainage
- Drainage of spring water, sludge and solids at civil engineering and construction sites
- Feed/Drainage of water containing foreign objects
- Drainage in case of disaster

Features

- High efficient hydraulic system
- Original design offers ease of maintenance
- Low fuel consumption
- Highly reliable gasoline engine
- Strengthened aluminium alloy pump body

LDP

Diesel Water Pump



Technical Data

- Max. flow: 55 m³/h
- Max. head: 25 m
- Power range: 3.8 HP
- Inlet/outlet: 2"/2"; 3"/3"

Applications

- Transfer of clean water or other liquids similar to water in physical and chemical properties
- Applicable in water supply and drainage for factories, mines, municipal facilities, etc.
- Fire fighting

Features

- High efficient hydraulic system
- Low fuel consumption
- Unique mechanical seal
- Anti-rust impeller and diffuser
- High quality forged steel crankshaft

LGP-T

Cast Iron Trash Pump



Technical Data

- Max. flow: 75 m³/h
- Max. head: 25 m
- Power range: 5 HP . 9 HP
- Inlet/Outlet: 2"/2" ; 3"/3"

Applications

- Sewage water transfer
- Water supply and drainage for factories, mines, municipal facilities, etc.

Features

- Aluminum alloy pump body
- Anti-rust cast iron impeller
- Low fuel consumption
- Anti-rust impeller and diffuser
- High quality forged steel crankshaft
- Honda engine

KB/PB/LB

Gasoline Engine Generator



Technical Data

- Max. output power: 7 kW
- Fuel tank: 13 ~ 28 L
- Max. displacement: 420 cc

Features

- Intelligent system
- Extra large fuel tank
- Pointer type fuel level indicator
- Moving without gravity
- Smart throttle

Domestic Pump & Commercial Pump



BRP

Circulation Pump



Technical Data

- Max. flow: 2.8 m³/h
- Max. head: 7.0 m
- Power range: 45 ~ 120 W

Applications

- Hot & cold water circulation system
- Wall-mounted gas boiler
- Cooling system

Features

- High temperature resistant pump body
- CALEFFI automatic exhaust valve
- Shielded motor
- Low noise operation(< 45dB)

LRP-A

Booster Pump



Technical Data

- Max. flow: 25 l/min
- Max. head: 9 m
- Power range: 123 W

Applications

- Pressure boosting for domestic water supply
- Floor heating system
- Solar pumping system

Features

- Automatic pressure boosting
- Anti-rust cast iron pump body
- Noryl impeller with heat resistance up to 150°C
- 99% alumina ceramic shaft
- Insulation class: H
- Protection class: IP42

LRP

Circulation Pump



Technical Data

- Max. flow: 170 l/min
- Max. head: 12 m
- Power range: 40 ~ 270 W
- DN: 15 - 40 mm
- Size: G1, G1.25, G1.5

Applications

- HVAC and pressure booting of hot water in family
- Water circulation for central and district heating system
- Domestic hot water circulation
- Automatic pressure boosting

Features

- Noryl impeller with heat resistance up to 150°C
- 99% alumina ceramic shaft
- Insulation class: H
- Protection class: IP44
- Three speed motor

LPm

Booster pump



Technical Data

- Max. flow: 325 l/min
- Max. head: 30.8 m
- Power range: 0.125 ~ 0.75 kW (0.17 ~ 1 HP)
- In/Outlet: 1"/1"; 1.5"/1.5"; 2"/2"; 2.5"/2.5"

Applications

- Hot water boosting for sauna, bathing and solves insufficient water pressure in high-rise building
- Domestic water supply

Features

- Anti-rust treatment for wetted parts
- AISI304 shaft
- Insulation class: F
- Protection class: IP44

LP

Circulation Pump



Technical Data

- Max. flow : 533 l/min
- Max. head : 36 m
- Power range: 1.5 ~ 2.2 kW (2 ~ 3 HP)

Applications

- Hot water circulation and heating system
- Air-conditioning system
- Industrial circulation system
- General pressure boosting in household

Features

- Copper winding
- Anti-rust treatment for wetted parts
- AISI 304 fabricated shaft
- Insulation class: B
- Protection class: IP44

AMS

Stainless Steel Centrifugal Pump



Technical Data

- Max. flow: 520 l/min
- Max. head: 30.4 m
- Power range: 0.37 ~ 2.2 kW (0.4 ~ 3 HP)
- DN: 25 ~ 50 mm

Applications

- Transfer of clean water or other liquids similar to water in physical and chemical properties
- Water circulation and water treatment system
- Agricultural irrigation

Features

- Stainless steel pump body
- AISI 304 fabricated shaft
- Built-in terminal protector for single phase motor
- Insulation class: F
- Protection class: IPX4

ABK

Semi-open impeller stainless-steel centrifugal pump



Technical Data

- Max. flow: 66 m³/h
- Max. head: 17.5 m
- Power range: 0.37 ~ 3 kW (0.5 ~ 4 HP)

Applications

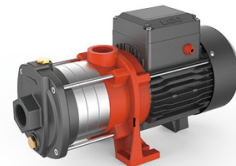
- Suitable for circulation cleaning system of various production lines and transporting media containing impurities.

Features

- Stainless steel pump body
- AISI 304 fabricated shaft
- Insulation class: F
- Protection class: IPX4

ECH-D

Horizontal Multistage Pump



Technical Data

- Max. flow: 7 m³/h
- Max. head: 36 m
- Power range: 0.37 ~ 0.75 kW
- DN: 25 mm

Applications

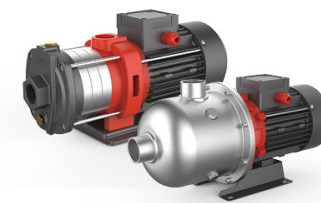
- It is applicable to household water supply, equipment support, pipeline pressurization, garden watering, vegetable greenhouse watering, fish farming and poultry raising, industrial and mining, water supply and drainage of enterprises and high-rise buildings, central air conditioner and centralized heating circulation system, etc.

Features

- Copper winding
- Built-in terminal protector for single phase
- Insulation class: F
- Protection class: IPX4

ECH/EDH-F

Stainless Steel Horizontal Multistage Pump



Technical Data

- Max. flow: 517 l/min
- Max. head: 59 m
- Power range: 0.37 ~ 4 kW (0.4 ~ 5.5 HP)
- DN: 25 ~ 50 mm

Applications

- Household water supply
- Pipeline pressurization
- Industrial and mining
- Fish farming and poultry raising
- Central air conditioning and heating circulation system

Features

- Copper winding
- AISI 304 fabricated shaft
- Built-in thermal protector
- Insulation class: F
- Protection class: IPX4

ECH-E

Pump With Automatic Electronic Pressure Switch



Technical Data

- Max. flow: 517 l/min
- Max. head: 55 m
- Power range: 0.37 ~ 4 kW (0.4 ~ 5.5 HP)

Applications

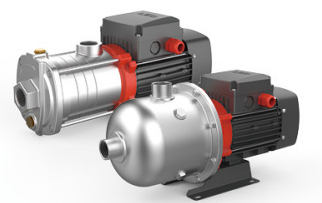
- Mains boosting
- Household water supply
- Boosting from above ground water tanks
- Light industrial use

Features

- Compact structure
- Reliable stainless steel construction for long lifespan
- Easy installation & operation
- Dry running protection

ECH/EDH

Stainless Steel Horizontal Multistage Pump



Technical Data

- Max. flow: 517 l/min
- Max. head: 55 m
- Power range: 0.37 ~ 4 kW (0.4 ~ 5.5 HP)
- DN: 25 ~ 50 mm

Applications

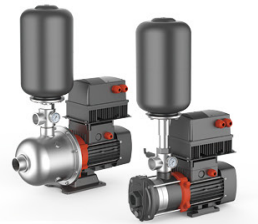
- Household water supply
- Pipeline pressurization
- Industrial and mining
- Fish farming and poultry raising
- Central air conditioning and heating circulation system

Features

- Copper winding
- AISI 304 fabricated shaft
- Built-in thermal protector
- Insulation class: F
- Protection class: IP55

BP

Pressure Booster System



Technical Data

- Max. flow: 517 l/min
- Max. head: 55 m
- Power range: 0.37 ~ 4 kW (0.5 ~ 5.5 HP)

Applications

- Pressure boosting for water supply and boosting in domestic and light commercial applications.

Features

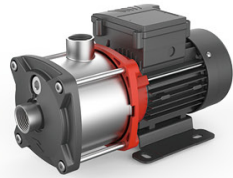
- Constant pressure with integrated speed control
- Dry running protection with auto-restart
- Easy installation & operation
- Quiet operation
- Stainless steel construction for long life
- Built-in non-return valve



Domestic Pump & Commercial Pump

EMH

Stainless Steel Horizontal Multistage Pump



Technical Data

- Max. flow: 28 m³/h
- Max. head: 84 m
- Max. power: 0.25 ~ 3.5 kW (0.33 ~ 4.7 HP)

Applications

- Household water supply
- Pipeline pressurization
- Industrial and mining
- Fish farming and poultry raising
- Central air conditioning and heating circulation system

Features

- AISI 304 welding shaft
- Copper winding
- Built-in thermal protector
- Insulation class: F
- Protection class: IPX4

EMHm-SE

Stainless Steel Horizontal Multistage Pump



Technical Data

- Max. flow: 6.5 m³/h
- Max. head: 57.5 m
- Max. power: 0.25 ~ 0.75 kW (0.33 ~ 1.0 HP)

Applications

- Household water supply
- Pipeline pressurization
- Industrial and mining
- Fish farming and poultry raising
- Central air conditioning and heating circulation system

Features

- AISI 304 welding shaft
- Copper winding
- Built-in thermal protector
- Insulation class: F
- Protection class: IPX4

MAC

Permanent Magnet Intgelligent Booster



Technical Data

- Max. flow: 4.8 m³/h
- Max. head: 40 m
- Max. power: 550 W
- Connector size: G1"

Applications

- Water supply and pressure boosting for all domestic application
- Garden watering, building water supply and agriculture

Features

- Permanent magnet motor
- Easy manipulation
- Protective functions
- Energy saving
- Space saving
- Low noise

XST

Standard Centrifugal Pump



Technical Data

- Max. flow: 210 m³/h
- Max. head: 95 m
- Power range: 0.75 ~ 55 kW (1 ~ 75 HP)
- DN: 32 ~ 80 mm

Applications

- Water in air conditioning systems
- Circulation & transfer of water
- Agricultural irrigation

Features

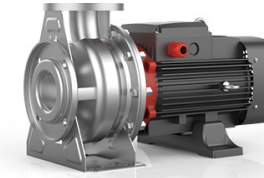
- Cast iron pump body
- Stainless steel shaft
- Cast iron/stainless steel impeller
- Overload protection
- Insulation class: F
- Protection class: IP54

Domestic Pump & Commercial Pump



XZS

Stainless Steel Standard Centrifugal Pump



Technical Data

- Max. flow: 132 m³/h
- Max. head: 58 m
- Power range : 1.1 ~ 22 kW (1.5 ~ 30 HP)
- DN: 32 ~ 65 mm

Applications

- Water supply and irrigation
- Boiler feeding and pure water treatment system
- Washing and cleaning system

Features

- IE2 motor
- Closed coupled construction
- Insulation class: F
- Protection class: IP55

LPP

Vertical In-line Pump



Technical Data

- Max. flow: 760 m³/h
- Max. head: 88 m
- Power range: 0.37 ~ 132 kW (0.5 ~ 177 HP)
- DN: 32 ~ 250 mm

Applications

- HVAC: Circulation of hot water, boiler mix-flow, etc.
- Air conditioning system: Cooling water circulation
- Water supply system: Filtration and transfer at water works
- Industrial applications
- Fire fighting

Features

- Stainless steel shaft
- Cast iron/stainless steel impeller
- Max operation pressure: 16 bar
- Dry running protection with mechanical seal
- Insulation class: F

LEP

End Suction Centrifugal Pump



Technical Data

- Max. flow: 1584 m³/h
- Max. head: 152 m
- Power range: 0.55 ~ 200 kW (0.7 ~ 272 HP)
- DN: 50 ~ 350 mm

Applications

- Water supply systems
- Pressure boosting
- Heating systems for commercial buildings
- Industrial applications
- Fire fighting

Features

- Cast iron/stainless steel pump body
- Stainless steel shaft
- Bronze/stainless steel/cast iron impeller
- Low noise&Long life bearing
- Max. operation pressure: 10 bar

EVP

Vertical Multistage Pump



Technical Data

- Max. flow: 267 l/min
- Max. head: 150 m
- Power range: 0.37 ~ 7.5 kW (0.4 ~ 10 HP)
- DN: 25 ~ 38 mm

Applications

- Water supply: Pressure boosting for main pipes and high-rise buildings
- Industrial pressure boosting: Water system, cleaning system, high pressure washing system and firefighting system
- Pressure boosting for pressure tank, sprinkling irrigation and trichling irrigation
- Air conditioning, cooling system and industrial cleaning

Features

- High strength engineering plastic impeller
- Cast iron inlet and outlet with special anti-rust treatment
- AISI 304 fabricated shaft
- Max. pressure: 10 bar

LVS/LVR

Stainless Steel Vertical Multistage Pump



Technical Data

- Max. flow: 240 m³/h
- Max. head: 323 m
- Power range: 0.37 ~ 110 kW (0.5 ~ 150 HP)
- DN: 25 ~ 150 mm

Applications

- Water supply & drainage for high-rise buildings, filtration and transfer at waterworks, pressure boosting in main pipe
- Washing and cleaning systems, boiler feeding, cooling water circulation, water treatment systems and auxiliary system
- Ultra-filtration systems, reverse osmosis systems, distillation systems, separators, swimming pools
- Sprinkler irrigation, drip-feed irrigation
- Food & beverage industry
- Fire fighting system

Features

- Totally enclosed & fan-cooled motor
- Liquid temperature: -20°C ~ +120°C
- Protection class: IP55
- Max. pressure: 33 bar

BWS

Pressure Booster System



Technical Data

- Max. flow: 1080 m³/h
- Max. head: 330 m
- DN: 25 ~ 100 mm

Applications

- Pressure boosting for fire fighting pumps, commercial complexes, hotels, industries, airports, metros, etc.

WTR/WTS

Stainless Steel Vertical Multistage Pump For RO System



Technical Data

- Max. flow: 8 m³/h
- Max. head: 211 m
- Power range: 1.1 ~ 1.4 kW (1.5 ~ 5 HP)
- DN: 1 1/4"

Applications

- RO System
- Water supply & drainage for high-rise buildings, filtration and transfer at waterworks, pressure boosting in main pipe
- Washing and cleaning systems, boiler feeding, cooling water circulation, water treatment systems and auxiliary system
- Ultra-filtration systems, reverse osmosis systems, distillation systems, separators, swimming pools
- Sprinkler irrigation, drip-feed irrigation
- Food & beverage industry
- Fire fighting system

Features

- Reliable
- Easy installation & maintenance
- High Cost-Effective
- Space saving

AP

DC Solar Peripheral Pump



Only DC



Technical Data

- Max. Flow: 3 m³/h
- Max. Head: 65 m
- Power range: 210 ~ 750 W

Applications

- Remote areas where grid power supply is non-existent
- Agriculture irrigation, Livestock feeding, Domestic water lifting
- Clear water supply from wells or reservoirs
- Off grid solar irrigation system

Features

- High Efficiency PMSM brushless Motor (PMSM: Permanent Magnet Synchronous Motor)
- NSK Bearing
- Brass Impeller
- With IP55 MPPT DC Inverter
- Soft start & VFD function
- Auto Start & Stop(with float switch)

XKP

Solar Swimming Pool Pump



Hybrid AC/DC



Technical Data

- Power Range: 500-1200W Only DC
900 W, 1200 W Hybrid AC/DC

Applications

- Remote areas where grid power supply is non-existent
- Agriculture irrigation, Livestock feeding, Domestic water lifting
- Clear water supply from wells or reservoirs
- Off grid solar irrigation system

Features

- High Efficiency PMSM brushless Motor (PMSM: Permanent Magnet Synchronous Motor)
- NSK Bearing
- Engineer plastic impeller
- With IP55 MPPT DC inverter or AC/DC inverter
- Soft start & VFD function

AC

Solar Centrifugal Pump



Only DC



Hybrid AC/DC



Technical Data

- Max. Head: 24 m Only DC
Max. Head: 17 m Hybrid AC/DC
- Power Range: 550 ~ 1500W Only DC
750 ~ 1500W Hybrid AC/DC

Applications

- Remote areas where grid power supply is non-existent
- Agriculture irrigation, Livestock feeding, Domestic water lifting
- Clear water supply from wells or reservoirs
- Off grid solar irrigation system

Features

- High Efficiency PMSM brushless Motor (PMSM: Permanent Magnet Synchronous Motor)
- NSK Bearing
- Brass impeller
- With IP55 MPPT DC inverter or AC/DC inverter
- Soft start & VFD function
- Auto start & Stop(with float switch)

LDG

3" DC Solar Screw Pump



Only DC



Technical Data

- Max. flow: 2.2 m³/h
- Max. head: 180 m
- Power range: 0.2 ~ 1.1 kW

Applications

- Remote areas where grid power supply is non-existent
- Agriculture irrigation, Livestock feeding, Domestic water lifting
- Clear water supply from wells or reservoirs
- Off grid solar irrigation system

Features

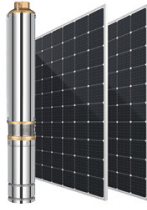
- High-precision Screw get higher efficiency
- High Efficiency PMSM brushless Motor (PMSM: Permanent Magnet Synchronous Motor) NSK Bearing &
- Stainless steel oil chamber
- With IP55 MPPT DC Inverter
- Soft start & VFD function
- Auto Start & Stop

LDP

3",4"
Solar Borehole Pump



Only DC



Technical Data

- Max. flow: 20 m³/h
- Max. head: 195 m
- Power range: 0.2 ~ 1.5 kW

Applications

- Remote areas where grid power supply is non-existent
- Agriculture irrigation, Livestock feeding, Domestic water lifting
- Clear water supply from wells or reservoirs
- Off grid solar irrigation system

Features

- High strength POM impeller & diffuser
- High Efficiency PMSM brushless Motor (PMSM: Permanent Magnet Synchronous Motor)
- NSK Bearing & Copper oil chamber/Outlet
- With IP55 MPPT DC inverter
- Soft start & VFD function
- Auto Start & Stop

LDS

3",4",6"
Solar Borehole Pump



Only DC



Technical Data

- Max. flow: 40 m³/h
- Max. head: 203 m
- Power range: 0.3 ~ 1.5 kW

Applications

- Remote areas where grid power supply is non-existent
- Agriculture irrigation, Livestock feeding, Domestic water lifting
- Clear water supply from wells or reservoirs
- Off grid solar irrigation system

Features

- 100% AISI304 impeller & diffuser
- High Efficiency PMSM brushless Motor (PMSM: Permanent Magnet Synchronous Motor)
- NSK Bearing & AISI304 oil chamber/Outlet
- With IP55 MPPT DC inverter
- Soft start & VFD function
- Auto Start & Stop

LPY-P

3",4"
Solar Borehole Pump



Hybrid AC/DC



Technical Data

- Max. Flow: 22 m³/h
- Max. Head: 195 m
- Power range: 0.75 ~ 2.2 kW
- Dimension: 3", 4"

Applications

- Remote areas where grid power supply is non-existent
- Agriculture irrigation, Livestock feeding, Domestic water lifting
- Clear water supply from wells or reservoirs
- Off grid solar irrigation system

Features

- High Efficiency PMSM brushless Motor (PMSM: Permanent Magnet Synchronous Motor)
- NSK Bearing & Copper oil chamber/Outlet
- With IP55 MPPT AC/DC inverter
- Soft start & VFD function
- Auto Start & Stop

LPY

3",4",6"
Solar Borehole Pump



Hybrid AC/DC



Technical Data

- Max. flow: 45 m³/h
- Max. head: 255 m
- Max. input power: 0.37 ~ 7.5 kW
- Dimension: 3", 4", 5", 6"

Applications

- For water supply from wells or reservoirs
- No electricity area's domestic water lifting
- Agriculture irrigation, livestock feeding
- Off grid solar irrigation system

Features

- 100% AISI304 impeller & diffuser
- High Efficiency PMSM brushless Motor (PMSM: Permanent Magnet Synchronous Motor)
- With IP55 MPPT AC/DC inverter
- Soft start & VFD function
- Auto On/Off

LPF

4",5",6"
Solar Borehole Pump



Water Filled Motor

Hybrid AC/DC



Technical Data

- Max. flow: 41 m³/h
- Max. head: 182 m
- Max. input power: 3 kW
- Dimension: 4", 5", 6"

Applications

- For water supply from wells or reservoirs
- No electricity area's domestic water lifting
- Agriculture irrigation, livestock feeding
- Off grid solar irrigation system

Features

- 100% AISI304 impeller & diffuser
- High Efficiency PMSM brushless Motor (PMSM: Permanent Magnet Synchronous Motor)
- Water-Cooled NEMA standard motor
- 100% Copper winding
- With IP55 MPPT AC/DC Inverter
- Soft start & VFD function
- Auto On/Off

DSFP

IP55 Solar Pump Inverter



Technical Data

- Power range: 1.5 ~ 7.5 kw

Applications

- Solar pump system
- Asynchronous motor & Synchronous Motor (3-phase)

Features

- MPPT function get high efficiency
- Soft start to prevent water hammer and increase system life
- LCD screen showing running status
- Fault self diagnosis and display
- Multiple protection
- GRPS Remote monitor function optional

LPS

Solar Submersible
Pump Systems



Technical Data

- Max. flow: 40.8 m³/h
- Max. head: 162 m
- Max. input power: 3.0 kW
- AC voltage range: 1x60 ~ 300 VAC , 50 ~ 60Hz
- DC voltage range: 60 ~ 400 VDC
- Min well diameter: 4" , 5" , 6"

Applications

- Offer wide range water supply options
- Offer water supply solution in remote areas

Features

- Water-cooled motor
- Advanced brushless dc motor offers maximum efficiency and energy save
- MPPT and DSP Technology
- Can be powered by various source
- Built-in Intelligent controller
- Various Protection functions

SPIm

IP20 Solar Pump Inverter



Technical Data

- Power range: 0.4 ~ 132 kw

Applications

- Solar pump system
- Asynchronous motor & Synchronous Motor (3-phase or 1-phase)

Features

- MPPT function get high efficiency
- Soft start to prevent water hammer and increase system life
- LCD screen showing running status
- Fault self diagnosis and display
- Multiple protection
- GRPS Remote monitor function optional

D/DF

Multistage Pump



Applications

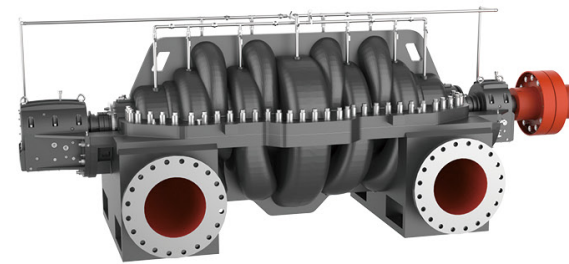
- Water drainage

Performance Range

- Discharge Dia.: 40 ~ 300 mm
- Flow: 3 ~ 864 m³/h
- Head: 50 ~ 800 m

DS

Multistage Split Case Pump



Applications

- Farmland irrigation
- Flood/storm water drainage

Performance Range

- Flow: 10 ~ 8000 m³/h
- Pressure: up to 20 Mpa
- Head: up to 1600 mm
- Temperature: -60 ~ +200 °C

NDX

End Suction Pump



Applications

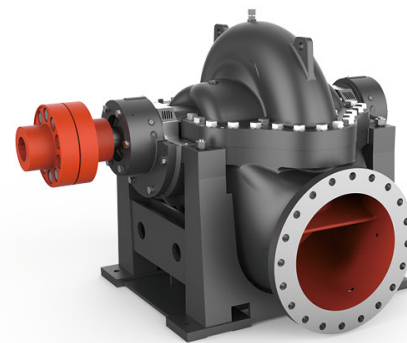
- Tap water intake & Supply
- Booster
- Water supply and drainage
- Circulation cooling water

Performance Range

- Discharge Dia.: 32 ~ 300 mm
- Flow: 5 ~ 1650 m³/h
- Head: 5 ~ 135 m

GS

Split Case Pump



Applications

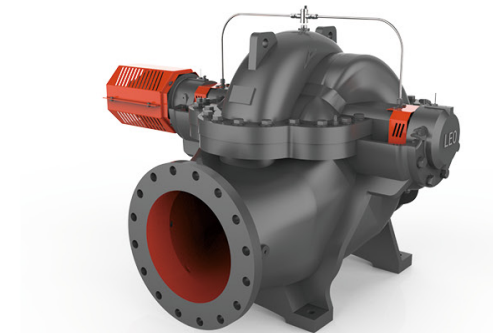
- Circulation water
- CWP / ACWP / CCWP

Performance Range

- Discharge Dia.: 150 ~ 2000 mm
- Flow: 9000 ~ 46000 m³/h
- Head: 17 ~ 155 m

GSX

Split Case Pump



Applications

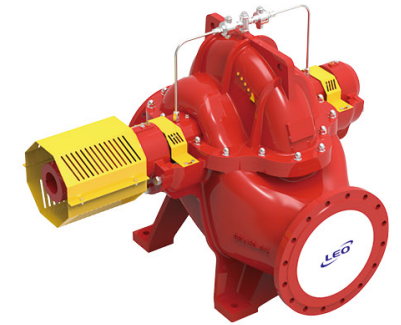
- Tap water intake & Supply
- Booster
- Water supply and drainage
- Circulation cooling water

Performance Range

- Discharge Dia.: 150 ~ 2000 mm
- Flow: 135 ~ 46000 m³/h
- Head: 12 ~ 225 m

GSX

Horizontal Split Case Fire Pump



Applications

- Water supply and boosting for fire fighting system in industrial and commercial facilities.

Performance Range

- Flow range: 113.5 ~ 227 m³/h
- Pressure range: 5.18 ~ 21.93 bar
- Inlet diameter: 6" , 8"

GLN

Condensate Pump



Applications

- Condensate water delivery

Performance Range

- Flow: 120 ~ 2200 m³/h
- Head: 36 ~ 360 m
- Speed: 1480 rpm

GLC

Long Shaft Pump



Applications

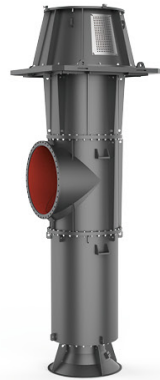
- Circulation water intake
- Water supply and drainage
- Circulation cooling water

Performance Range

- Discharge Dia.: 150 ~ 1000 mm
- Flow: 100 ~ 10000 m³/h
- Head: 10 ~ 200 m

HLBK

Mixed Flow Pump



Applications

- Farmland irrigation
- Flood/storm water drainage
- Water drainage
- Circulation water
- CWP / ACWP / CCWP

Performance Range

- Discharge Dia.: 150 ~ 3500 mm
- Flow: 0.5 ~ 20 m³/s
- Head: 5 ~ 50 m

QHD/QZ

Submersible Pump



Applications

- Farmland irrigation
- Flood/storm water drainage

Performance Range

- Discharge Dia.: 350 ~ 2400 mm
- Flow: 600 ~ 80000 m³/h
- Head: 1 ~ 25 m

ZLB

Axial Flow Pump



Applications

- Flood drainage
- Farmland irrigation

Performance Range

- Discharge Dia.: 150 ~ 5000 mm
- Flow: 180 ~ 36000 m³/h
- Head: 0 ~ 11.5 m

WQ

Submersible Pump



Applications

- Sewage drainage
- Storm water drainage

Performance Range

- Discharge Dia.: 50 ~ 900 mm
- Flow: 20 ~ 12000 m³/h
- Head: 5 ~ 60m

OH (OH-1/2)

Single Stage Overhang Pump

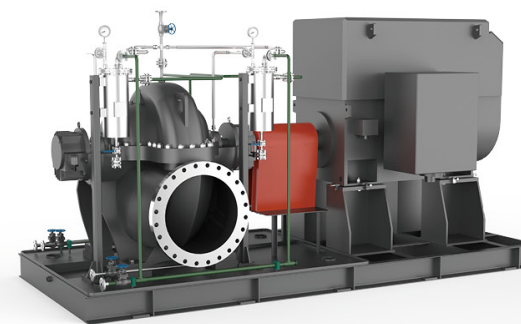


Technical Data

- Max. flow: 2400 m³/h
- Max. head: 250 m
- Max. work pressure: 10.0 Mpa
- Liquid temperature range: -80 ~ 450 °C
- Standard: API610

A (BB1)

Axial Split Horizontal Centrifugal Pump



Technical Data

- Max. flow: 12000 m³/h(Single Stage) / 3600 m³/h(Two Stage)
- Max. head: 300 m(Single Stage) / 440 m(Two Stage)
- Max. work pressure: 15.0 MPa
- Liquid temperature range: -60 ~ 200 °C
- Standard: API610

OH (OH-3)

Vertical Piping Pumps

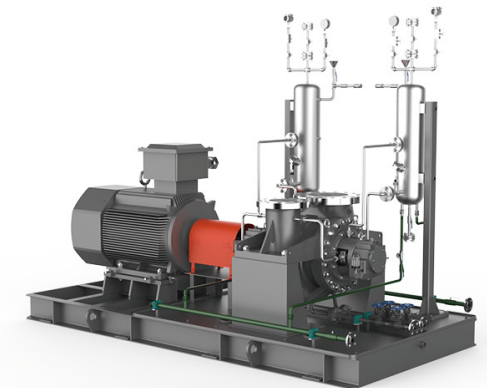


Technical Data

- Max. flow: 2400 m³/h
- Max. head: 250 m
- Max. work pressure: 5 MPa
- Liquid temperature range: -60 ~ 250 °C
- Standard : API610

HR (BB2)

Radial Split Horizontal Centrifugal Pumps

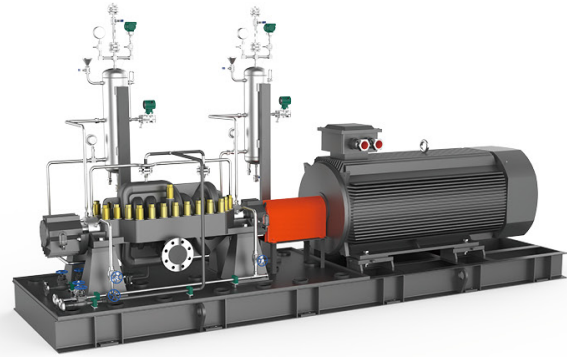


Technical Data

- Max. flow: 4500 m³/h
- Max. head: 250 m
- Max. work pressure: 15 MPa
- Liquid temperature range: -80 ~ 450 °C
- Standard: API610

MA (BB3)

Axial Split Horizontal Centrifugal Pumps

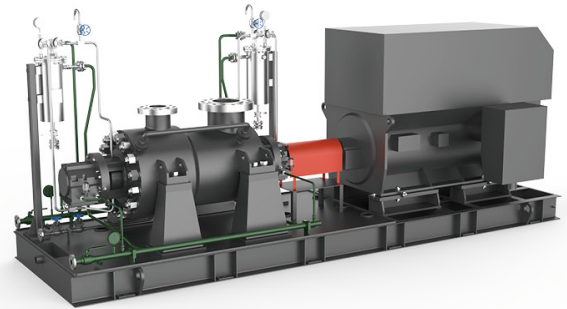


Technical Data

- Max. flow: 1400 m³/h
- Max. head: 2000 m
- Max. work pressure: 25 Mpa
- Liquid temperature range: -60 ~ 200 °C
- Standard: API610

T (BB5)

Radial Split Horizontal Centrifugal Pumps

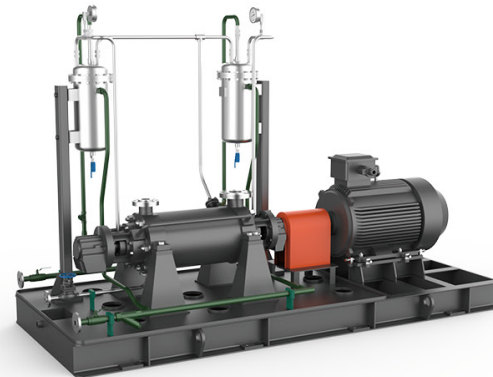


Technical Data

- Max. flow: 1400 m³/h
- Max. head: 3600 m
- Max. work pressure: 42.0 MPa
- Liquid temperature range: -80 ~ 450 °C
- Standard: API610

M (BB4)

Radial Split Horizontal Centrifugal Pumps



Technical Data

- Max. flow: 1200 m³/h
- Max. head: 2000 m
- Max. work pressure: 25.0 MPa
- Liquid temperature range: -60 ~ 250 °C
- Standard: API610

HY/HL/HRY (VS4)

Vertical Centrifugal Pump



Technical Data

- Max. flow: 1000 m³/h
- Max. head: 125 m
- Max. work pressure: 2.5 MPa
- Liquid temperature range: -80 ~ 500 °C
- Standard: API610

TV (VS1/VS6)

Vertical Suspended Centrifugal Pump



Technical Data

- Max. flow: 1000 m³/h
- Max. head: 1000 m
- Max. work pressure: 15 MPa
- Liquid temperature range: -100 ~ 250 °C
- Standard range: API610

HLB/HNB (VS5)

Vertical Centrifugal Pump

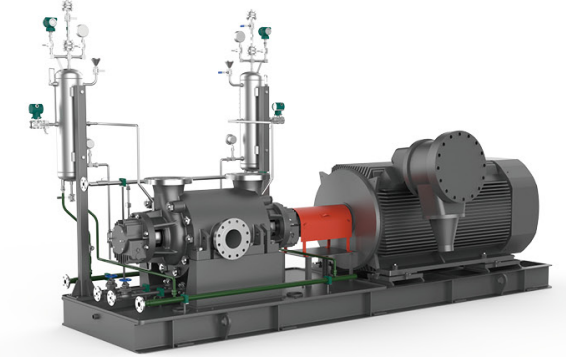


Technical Data

- Max. flow: 1200 m³/h
- Max. head: 60 m
- Max. work pressure: 2.5 MPa
- Liquid temperature range: -20 ~ 200 °C
- Max. immersion depth: 1.5 m
- Standard: API610

HT

Hydraulic Power Recovery Turbine



Technical Data

- Max. flow: 10000 m³/h
- Max. head: 3500 m
- Max. work pressure: 35 MPa
- Liquid temperature range: -80 ~ 450 °C
- Standard: API610

Fix Membrane Tank



- Type: Horizontal tank, Vertical tank, Vertical tank with foot
- Capacity: 2 ~ 150 L
- Max. Pressure: 16 bar
- Max. Temperature: +99 °C
- Connection: 1" BSP/NPT

Tank



- Type: horizontal tank, vertical tank, vertical flat tank
- Capacity range: 2 ~ 100 L
- Max. pressure: 8 bar
- Max. temperature: 99 °C
- Connection: G1/2", G1"

Electromagnetic Switch



- Type: PS-04A, PS-04B, PS-04C, PS-04D, PS-04E, PS-04E-1, PS-04T
- Rated voltage: 220V ~ 240V / 110V ~ 120V
- Frequency: 50/60 Hz
- Max. power: 1.5 kW
- Starting pressure setting: 1.2 bar / 1.5 bar / 2.2 bar
- Max. operating pressure: 10 bar

Intelligent Controller



Rated Input Voltage

- Single phase: 220V/50Hz
- Three phase: 380V/50Hz

Features

- Over load protection
- Under/Over voltage protection
- Motor stalled protection
- Dry run protection with sensor free
- Open phase protection
- Leakage protection (customized)

Pressure Switch



- Type: PS-02B, PS-02C, PS-02D
- High precision
- High sensitivity
- Adjustable pressure range 1.4 ~ 5.6 bar
- G1/4"

Float Switch



- Type: FLO-01B, FLO-01B(with balance block)
- Specification: 5(4)250V, 10(8)125V
- Life time: 5000 cycles

Pressure Gauge



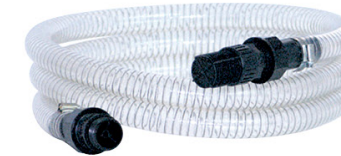
- Two connection types: (1) G1/4", (2) M10X1
- 40 mm gauge with scale of 0 ~ 6 bar
- 50 mm gauge with scale of 0 ~ 10 bar or 0 ~ 6 bar
- Back/bottom connection

Flexible Hose



- Type: FH12.8-01, FH44-03
- Inlet: G3/4", G1"
- Outlet: G3/8", G1"
- Material: stainless steel wire

Hose



- Length: 4m, 5m, 7m
- Diameter: 1"
- Max. liquid temperature : 35 °C

3-Way/5-Way



- Type: 3TA, 5TA, 5TB
- Connection: G1"
- Length: 70, 80, 90

Foot Valve



- Type: FVA1, FVA1.25, FVA1.5, FVA2, FVA3
- Connection: 1" ~ 3"
- Stainless steel mesh
- Can be used as a check valve

Filter



- Type: WF-01B, WF-02B
- Capacity: 1L, 2L
- Inlet/outlet: 1" x 1"
- Max. pressure: 5 bar

